

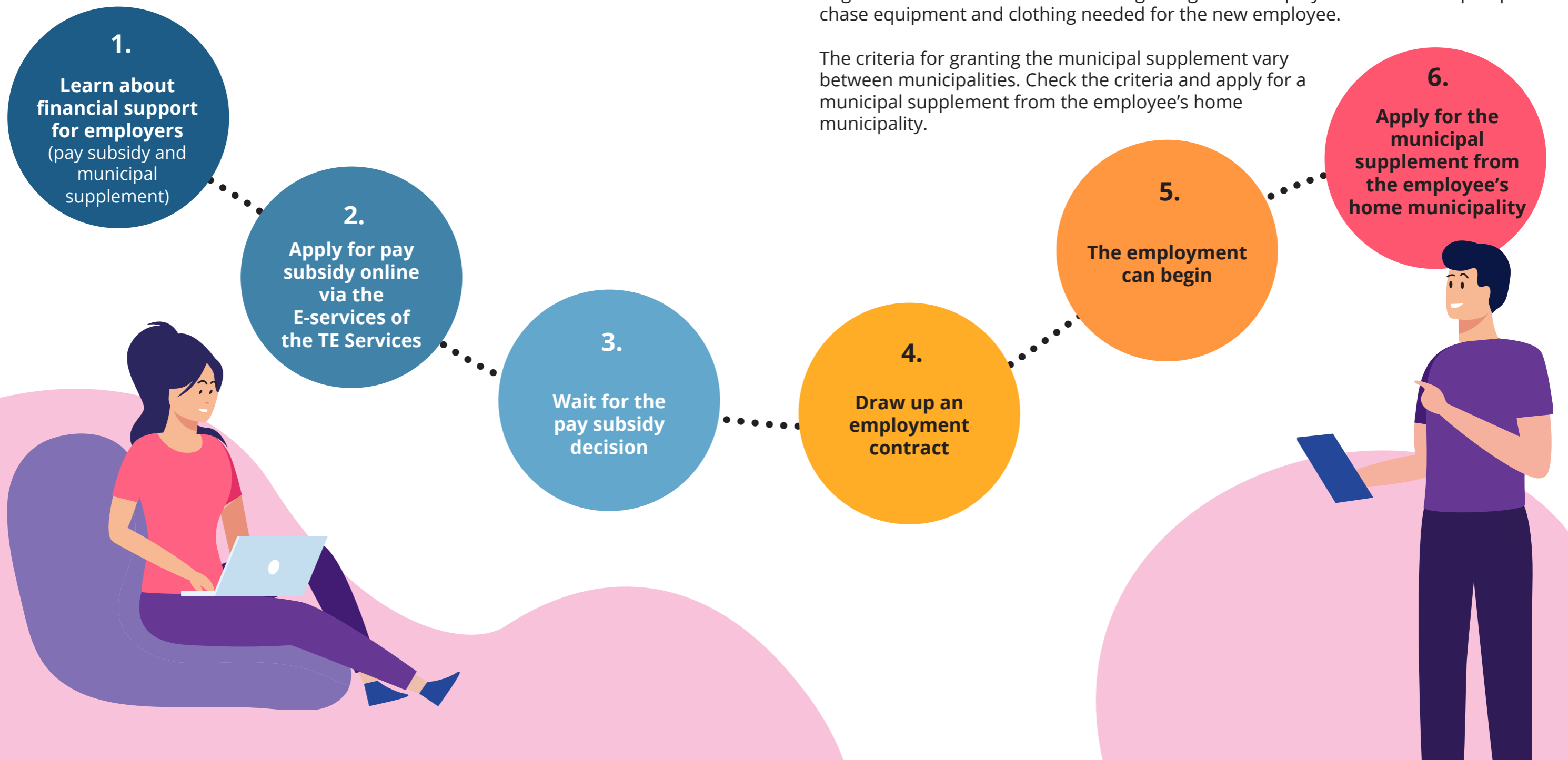
# Financial employment support for employers

– Pay subsidy and municipal  
supplement



# Financial support for employers makes it easier to hire an employee

**Pay subsidy** and the **municipal supplement** can be granted for permanent or fixed-term employment and apprenticeships.



## Pay subsidy

The pay subsidy is a form of financial support provided by the state that can be granted to an employer to cover some of the wage costs of an unemployed jobseeker to compensate for their lack of professional competence, for example.

The pay subsidy may also be granted for part-time employment if it improves the jobseeker's chances of finding employment. This can be justified for the employment of people with partial work ability, for example.

## Municipal supplement

The purpose of the municipal supplement is to support the start of the employment relationship, and it is granted for a limited period. The municipal supplement can be granted to cover wage costs in addition to the pay subsidy and, on a municipal basis, to cover recruitment costs, allowing the employer to cover the costs of guidance and orientation at the beginning of the employment relationship or purchase equipment and clothing needed for the new employee.

The criteria for granting the municipal supplement vary between municipalities. Check the criteria and apply for a municipal supplement from the employee's home municipality.

## More information about the pay subsidy

### Uusimaa TE Office/

#### Employer and corporate customers

tel. 0295 040 002

(Mon–Fri 9:00–16:15).

[rekrytointi.uusimaa@te-toimisto.fi](mailto:rekrytointi.uusimaa@te-toimisto.fi)

[te-palvelut.fi/employers/](https://te-palvelut.fi/employers/)

[find-an-employee/pay-subsidy](https://te-palvelut.fi/employers/find-an-employee/pay-subsidy)

## Local government pilots on employment

### Employment Espoo

tel. 09 8169 4000

(Mon–Fri 9:00–16:00)

[palkkatuki@espoo.fi](mailto:palkkatuki@espoo.fi)

[tyollisyysespoo.fi](https://tyollisyysespoo.fi)

### City of Helsinki Employment Services

[palkkatuki@hel.fi](mailto:palkkatuki@hel.fi)

[tyollisyyspalvelut.hel.fi/en](https://tyollisyyspalvelut.hel.fi/en)

### Vantaa and Kerava Employment Services

tel. 09 8395 0130

(Mon–Fri 9:00–16:00)

[palkkatuki.vantaa-kerava@vantaa.fi](mailto:palkkatuki.vantaa-kerava@vantaa.fi)

[vantaa.fi/tyollistamisentuet](https://vantaa.fi/tyollistamisentuet)

### Porvoo local government pilot on employment

[tyollisyys@porvoo.fi](mailto:tyollisyys@porvoo.fi)

[visitporvoo.fi/employment-services](https://visitporvoo.fi/employment-services)

### Raasepori and Hanko local government pilot on employment

tel. 019 289 2355

[palkkatuki.hanko@raasepori.fi](mailto:palkkatuki.hanko@raasepori.fi)

[raasepori.fi/tyollisyyspalvelut/](https://raasepori.fi/tyollisyyspalvelut/)

[tyollisyysden-kuntakokeilu/](https://raasepori.fi/tyollisyyspalvelut/tyollisyysden-kuntakokeilu/)

## More information about the municipal supplement

### Espoo

tel. 09 8169 4000

(Mon–Fri 9:00–16:00)

[palkkatuki@espoo.fi](mailto:palkkatuki@espoo.fi)

[businessespoo.com/en-US](https://businessespoo.com/en-US)

### Helsinki

[helsinkilisa@hel.fi](mailto:helsinkilisa@hel.fi)

[hel.fi/helsinki/en/administration/](https://hel.fi/helsinki/en/administration/enterprises/services-employers/)

[enterprises/services-employers/](https://hel.fi/helsinki/en/administration/enterprises/services-employers/)

[helsinki-benefit/](https://hel.fi/helsinki/en/administration/enterprises/services-employers/)

### Vantaa

tel. 09 8395 0130

(Mon–Fri 9:00–16:00)

[tyollistamistuet@vantaa.fi](mailto:tyollistamistuet@vantaa.fi)

[vantaa.fi/tyollistamisentuet](https://vantaa.fi/tyollistamisentuet)

### Kerava

tel. 09 8395 0130

(Mon–Fri 9:00–16:00)

[tyollisyyspalvelut@kerava.fi](mailto:tyollisyyspalvelut@kerava.fi)

[kerava.fi/palvelut/työ-ja-elinkeinot/](https://kerava.fi/palvelut/tyo-ja-elinkeinot/tyollisyysden-edistaminen)

[tyollisyysden-edistaminen](https://kerava.fi/palvelut/tyo-ja-elinkeinot/tyollisyysden-edistaminen)

### Porvoo

[tyollisyys@porvoo.fi](mailto:tyollisyys@porvoo.fi)

[visitporvoo.fi/employment-services](https://visitporvoo.fi/employment-services)

### Raasepori

tel. 019 289 2288

[stefan.fri@raasepori.fi](mailto:stefan.fri@raasepori.fi)

[raasepori.fi/tyollisyyspalvelut/](https://raasepori.fi/tyollisyyspalvelut/)

[tyollisyysden-kuntakokeilu](https://raasepori.fi/tyollisyyspalvelut/tyollisyysden-kuntakokeilu/)

