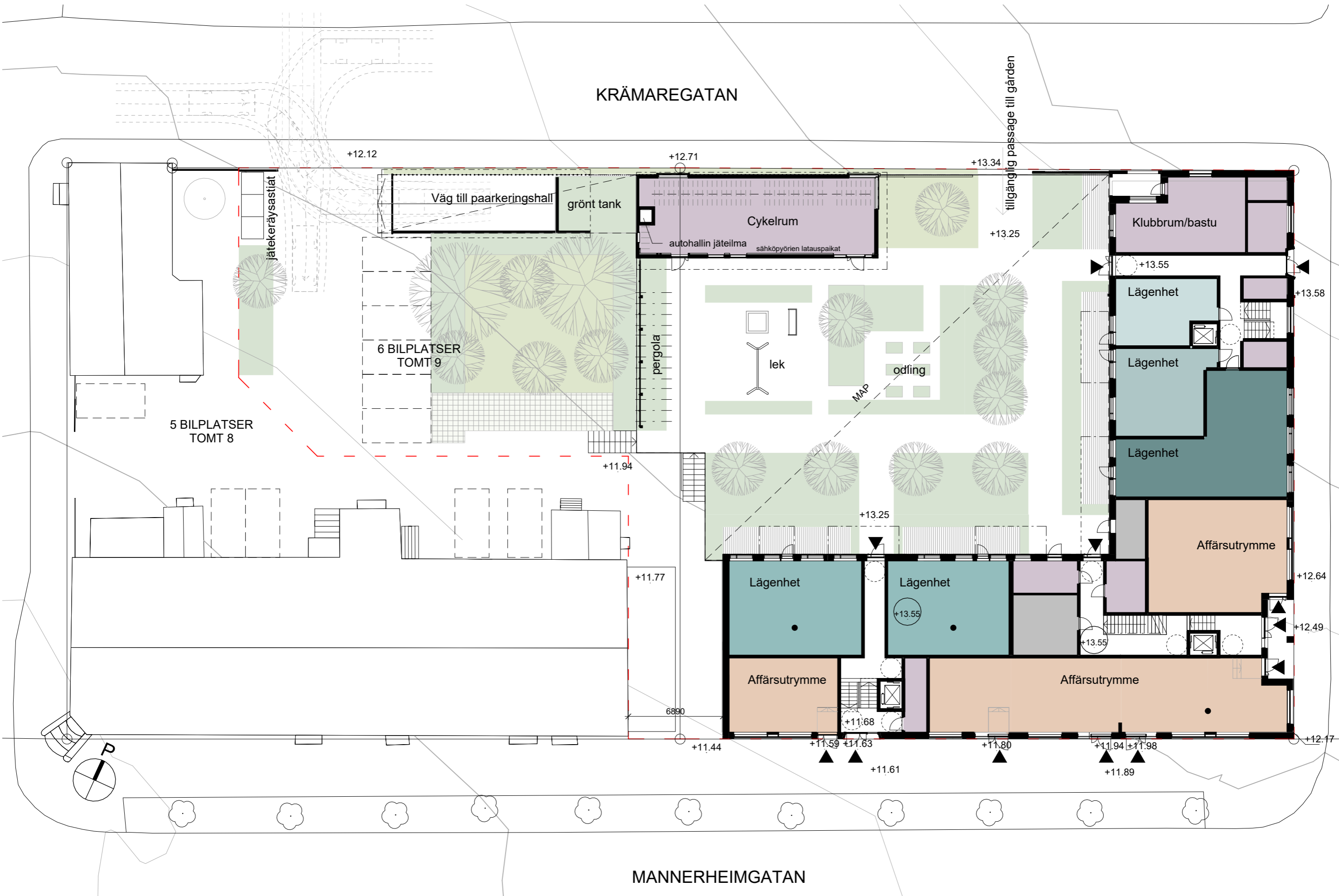


KRÄMAREGATAN

tillgånglig passage till gården



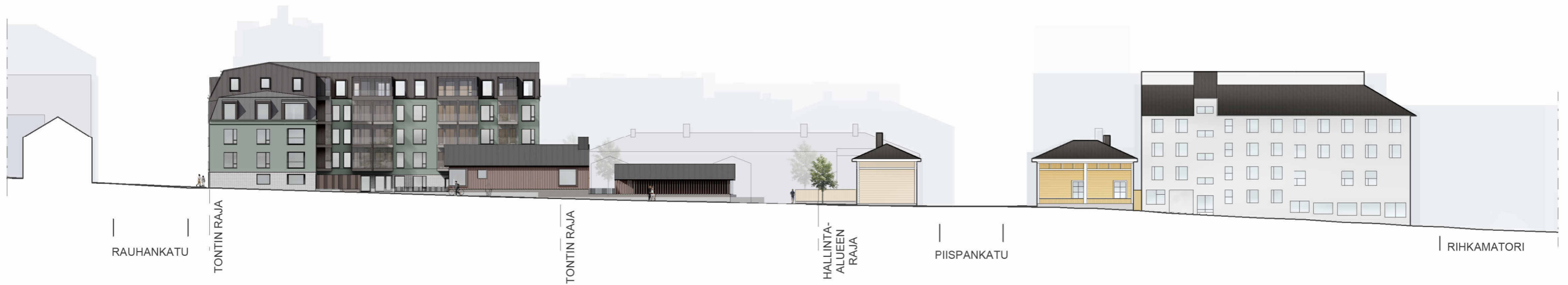
MANNERHEIMGATAN



ALUEJULKISIVU ETELÄÄN



ALUEJULKISIVU ITÄÄN





- 1. Reliefmurning
- 2. Puts
- 3. Plåttak

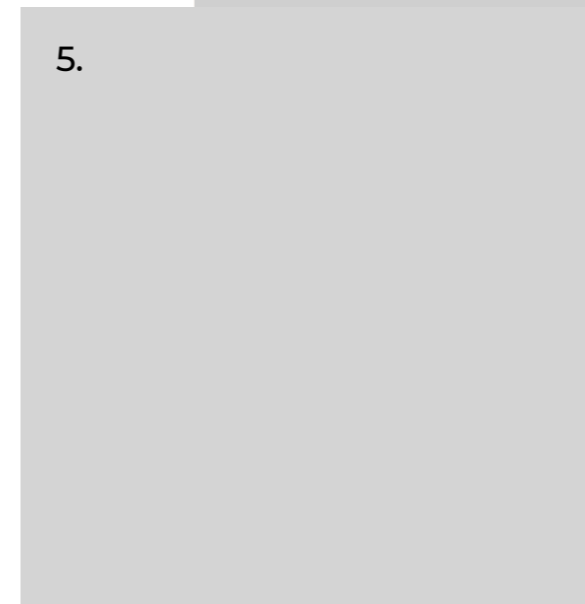
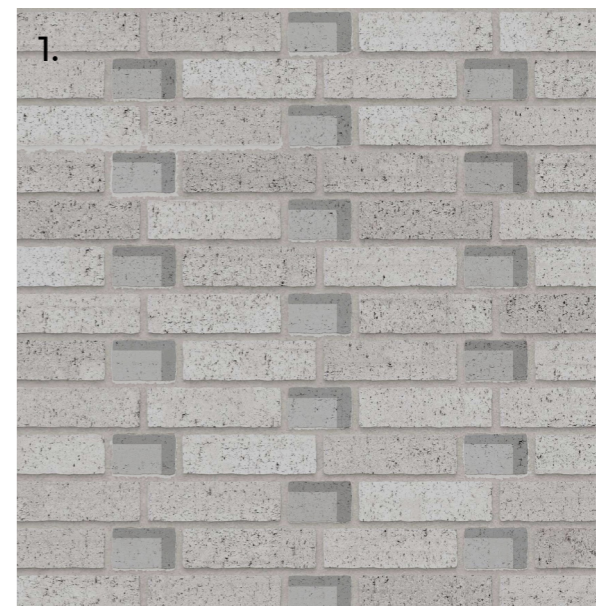
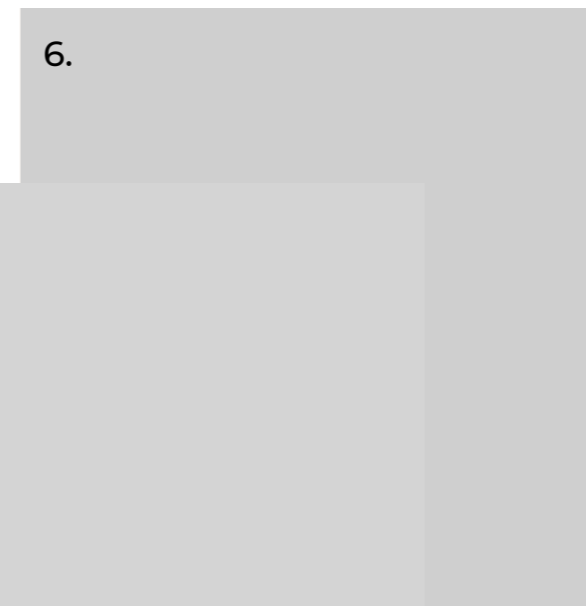
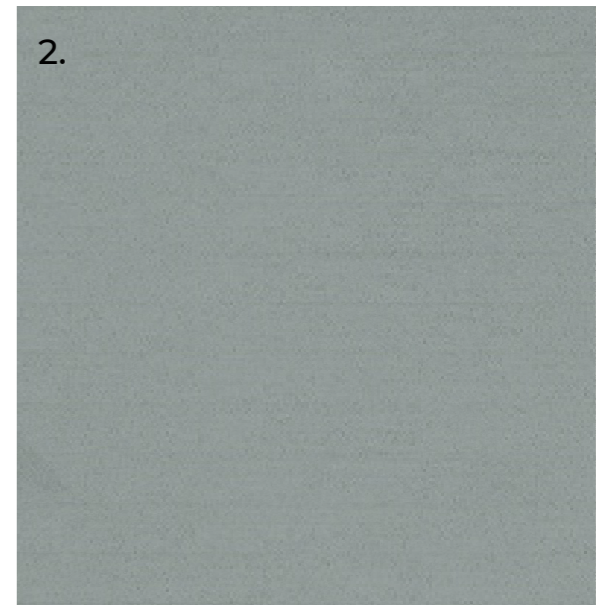
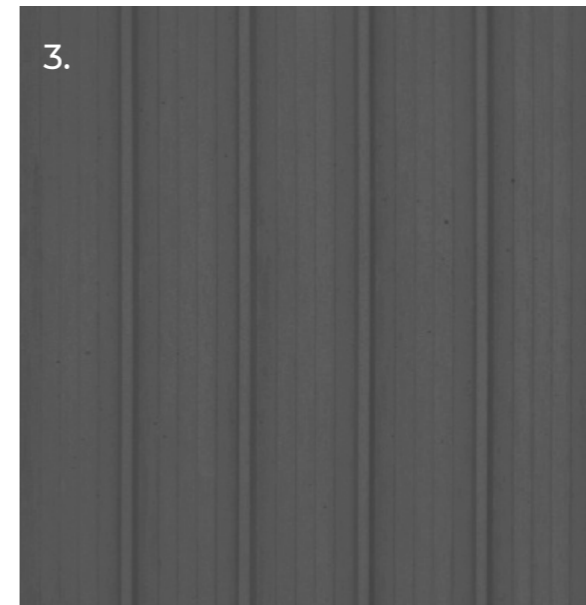






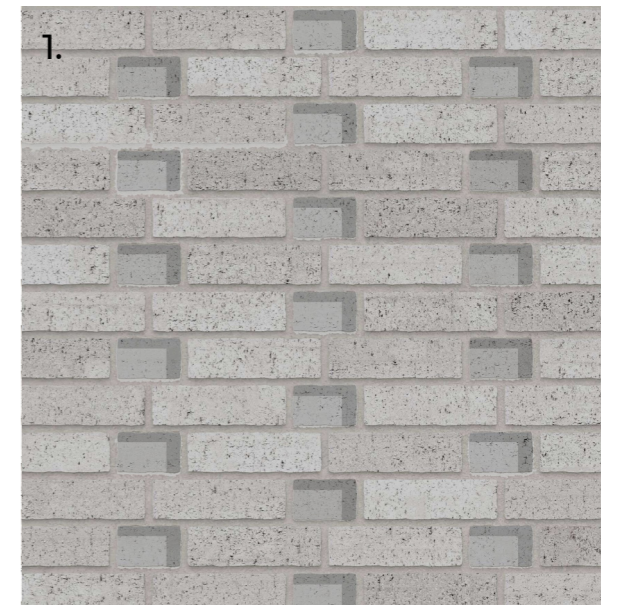
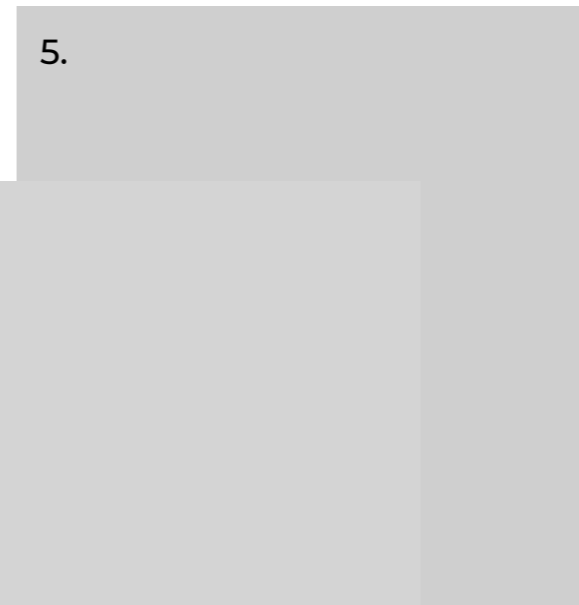
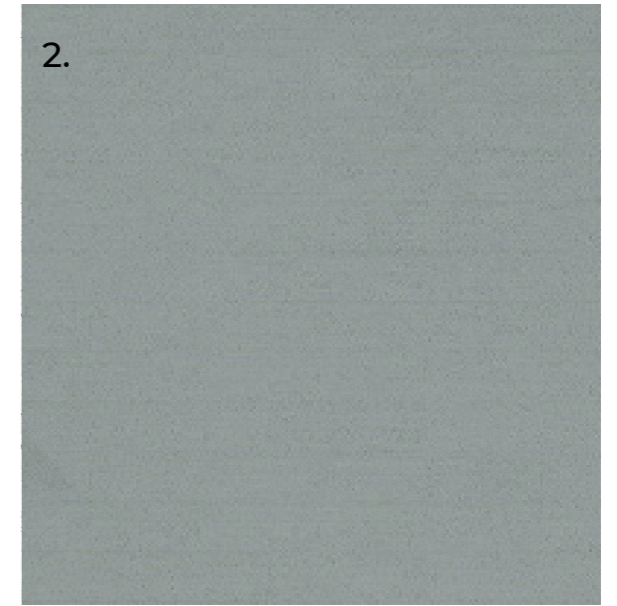
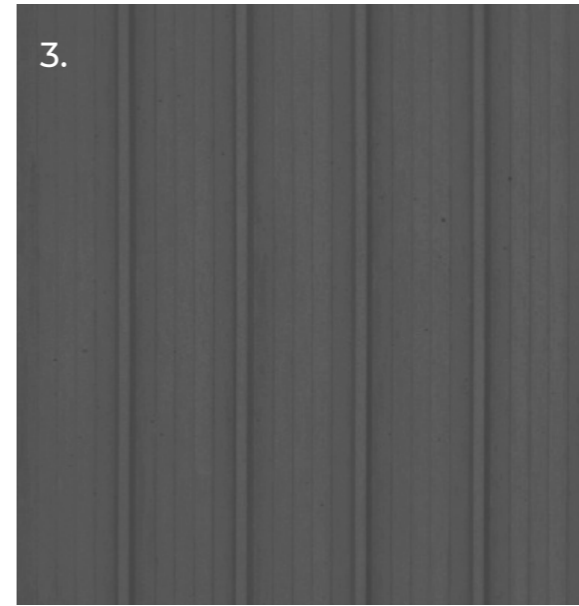


Gatufasad



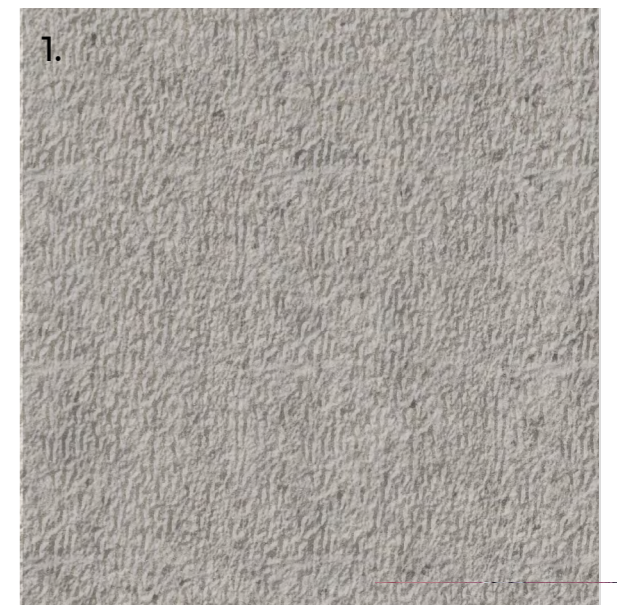
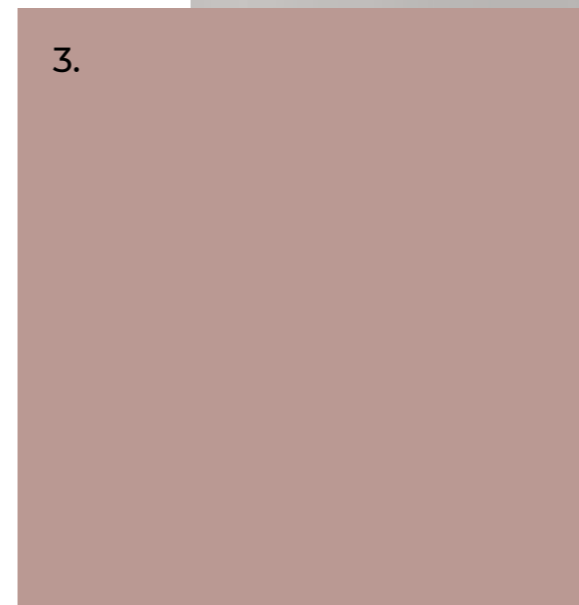
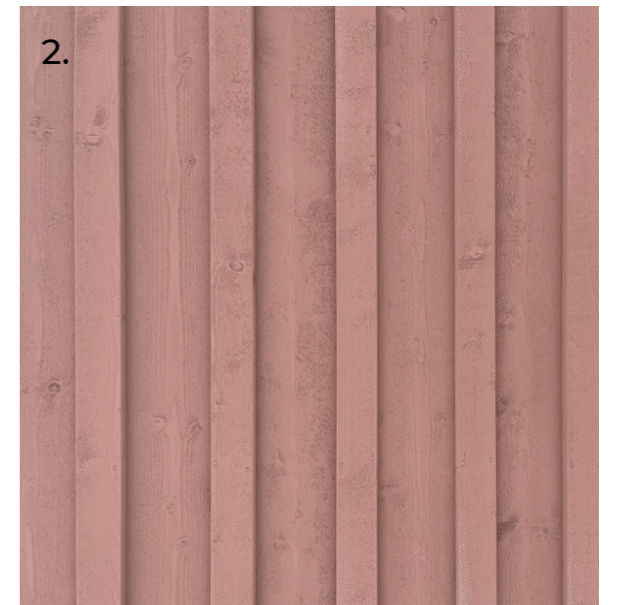
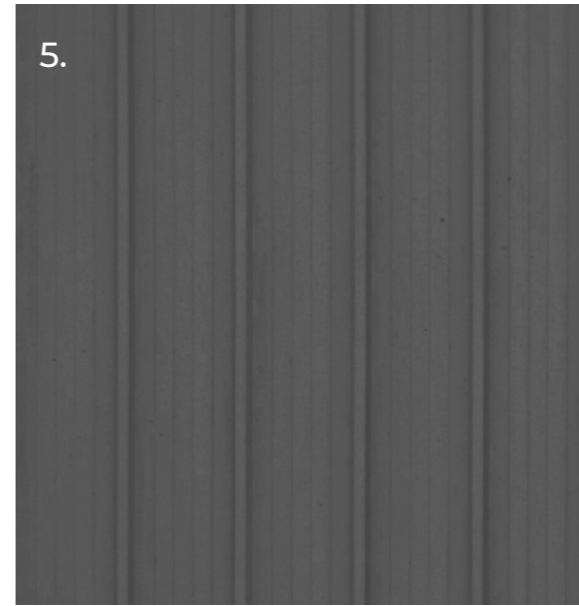
1. Reliefmurning
2. Grön puts
3. Svart plåttak
4. Glas, klart
5. Målad metall, ljusgrå
6. Målad metall, ljusgrå

Innergårdsfasad



1. Wienerberger Halla Vuolu, reliefmurning
2. Grön puts
3. Svart plåttak
4. Glas, klart
5. Målad metall, ljusgrå
6. Målad metall, ljusgrå

Gårdsbyggnader



1. Sockel, betong
2. Lockpanel, Tikkurila Q303
3. RR 40
4. Träfönster, Tikkurila Q303
5. Svart plåttak
6. Glas, klart